



The Shimadzu Prominence IC

Anion Suppressor Ion Chromatograph



The Shimadzu Prominence Ion Chromatograph



Created for Performance



Created for Performance



Conductivity Detector

Sensitive yet stable detection resulting from two layers of thermal regulation; the temperature controlled flow cell is mounted inside the column oven.

Anion Suppressor

Low noise and minimized internal volume for efficient baseline suppression and the highest quality chromatography.

Eluent Delivery Pump

Inert materials and low pulsation eluent flow for uncompromised IC.

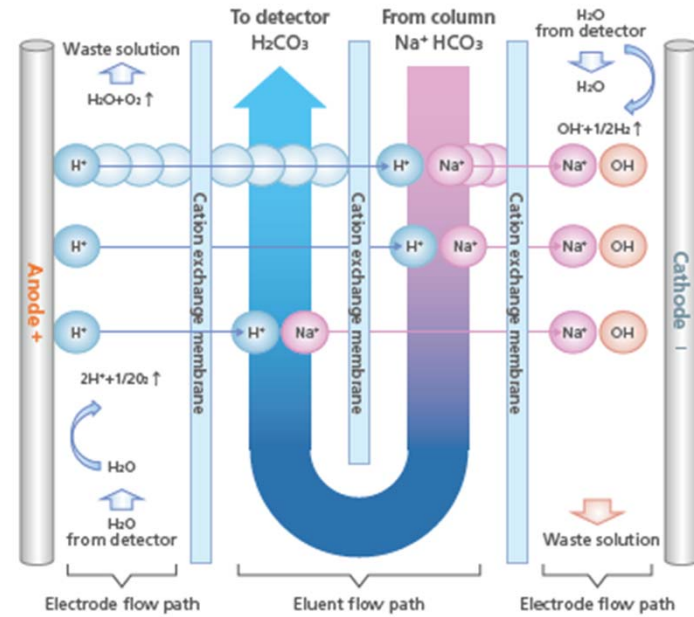
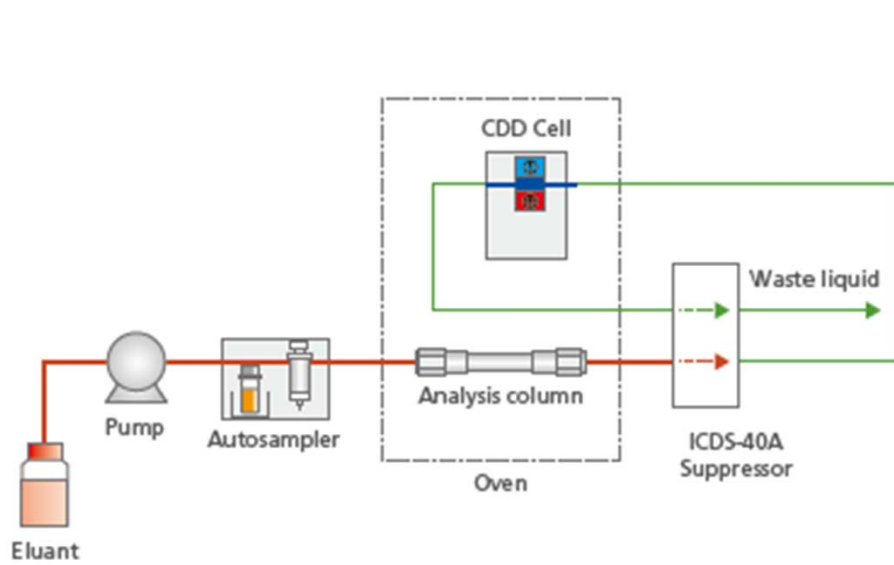
Column Oven

Forced air heating to 85C in a narrow profile.

Autosampler

High speed injections from 0.1 to 2000 μ L with the lowest carryover.

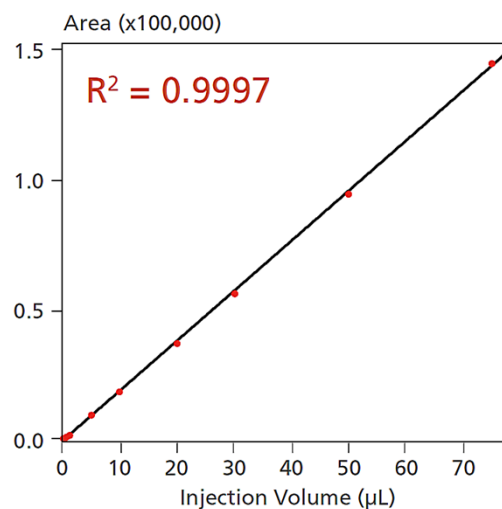
The ICDS-40A Electrodealytic Suppressor



Cations in the eluent are exchanged with hydronium ions that are continuously generated from water electrolysis.

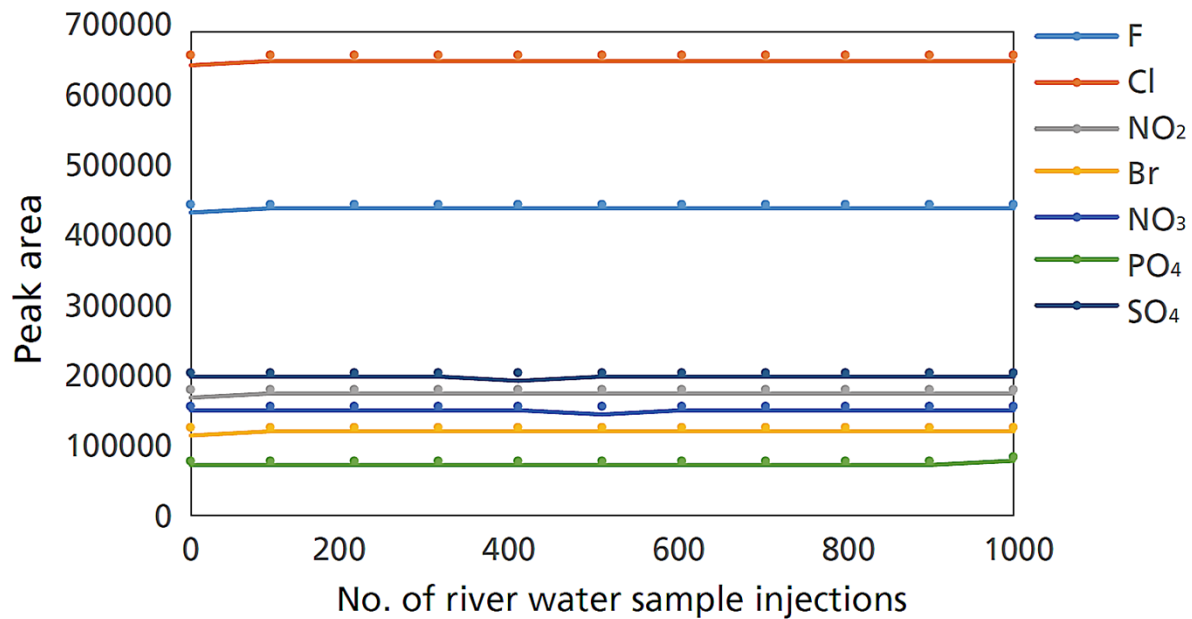
Quantitative Precision and Accuracy

The clean, precise autosampler uses a needle-in-flow path design to reduce carryover to undetectable levels and produces injection accuracies necessary for robust quantitation.



Injection volume (µL)	Area RSD(%) (n=5)
0.2	1.05
1	0.86
10	0.25
20	0.04
50	0.04
75	0.08

Reliability and Robustness



The ICDS-40A is robust and reliable for anions analysis

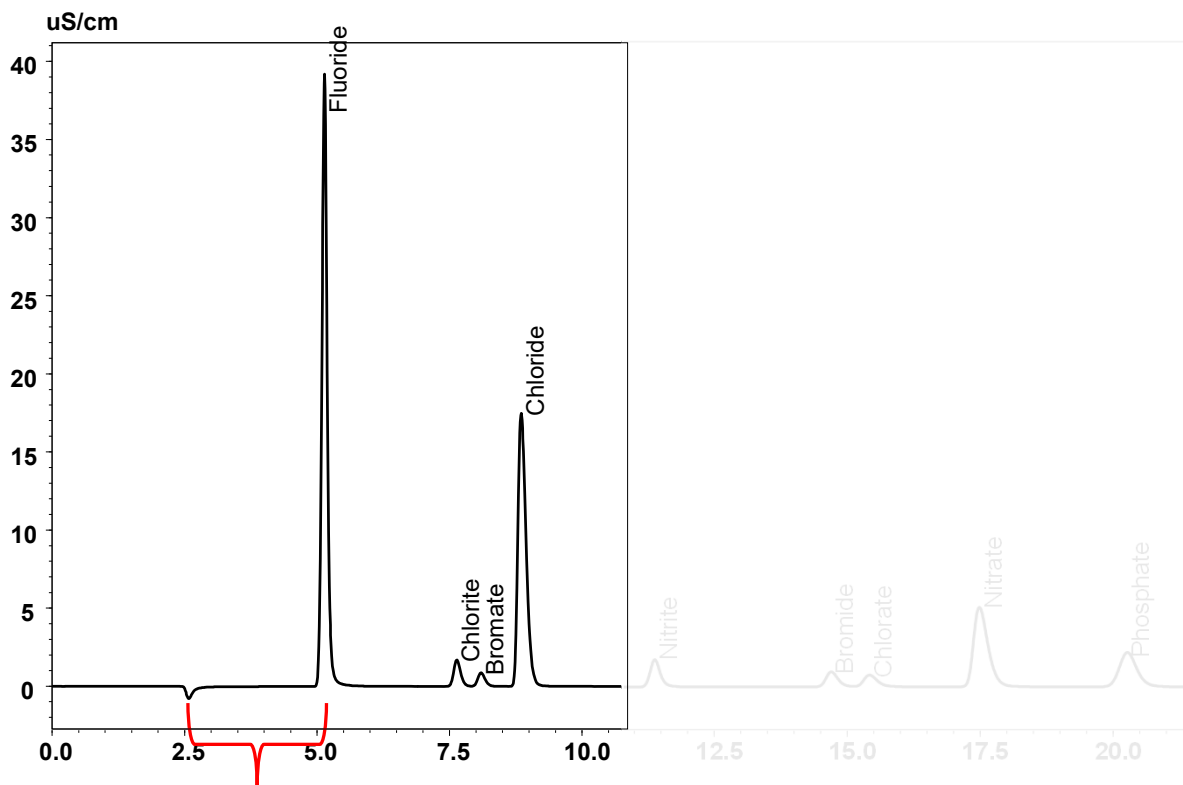
EPA Method 300.1 Part A, Part B

Drinking water anions and disinfection by-products

Quality Marks

- Narrow, symmetrical peaks
- Narrow water dip
- Retention of Fluoride away from water dip

Robust quantitation at low levels



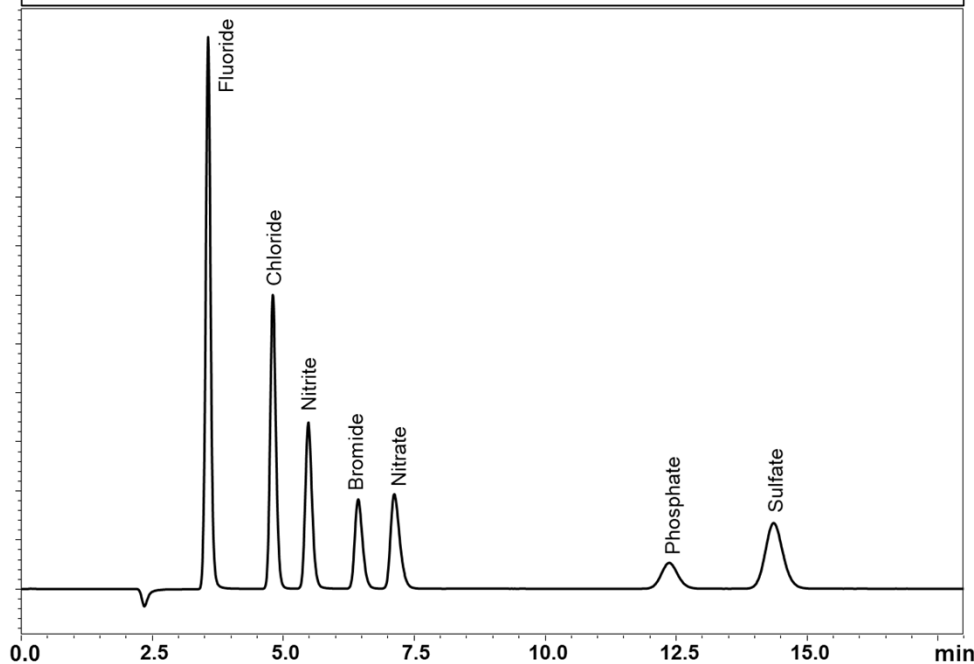
Environmental Applications

Application News

High Performance Liquid Chromatography

The Determination of EPA Method 300 Anions Using a Shimadzu Ion Chromatography System

No. HPLC-021

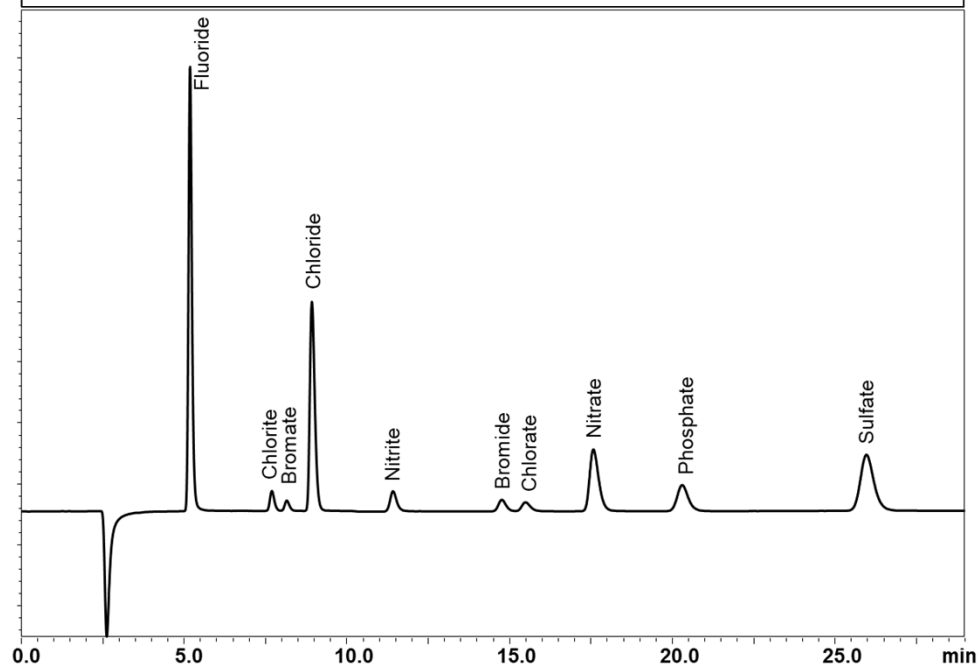


Application News

High Performance Liquid Chromatography

The Determination of 10 Anions in EPA Method 300.1 using Shimadzu High-Resolution Ion Chromatography

No. HPLC-022



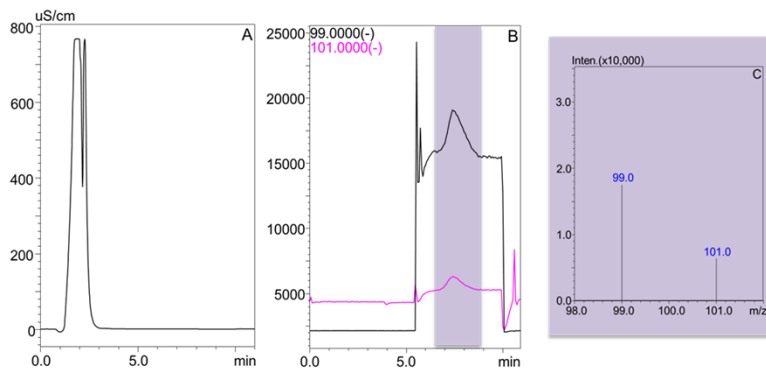
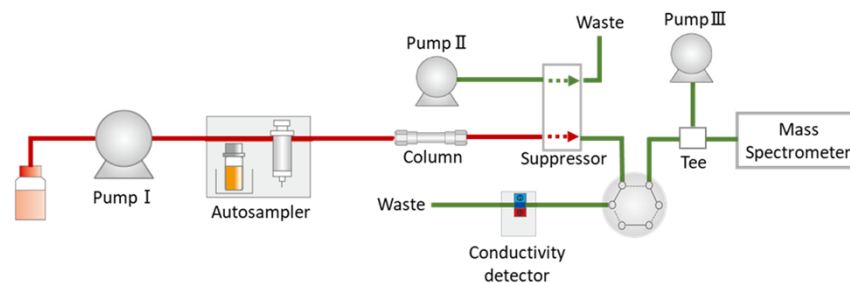
Advanced Application – Perchlorate by ICMS

Application News

No. HPLC-035

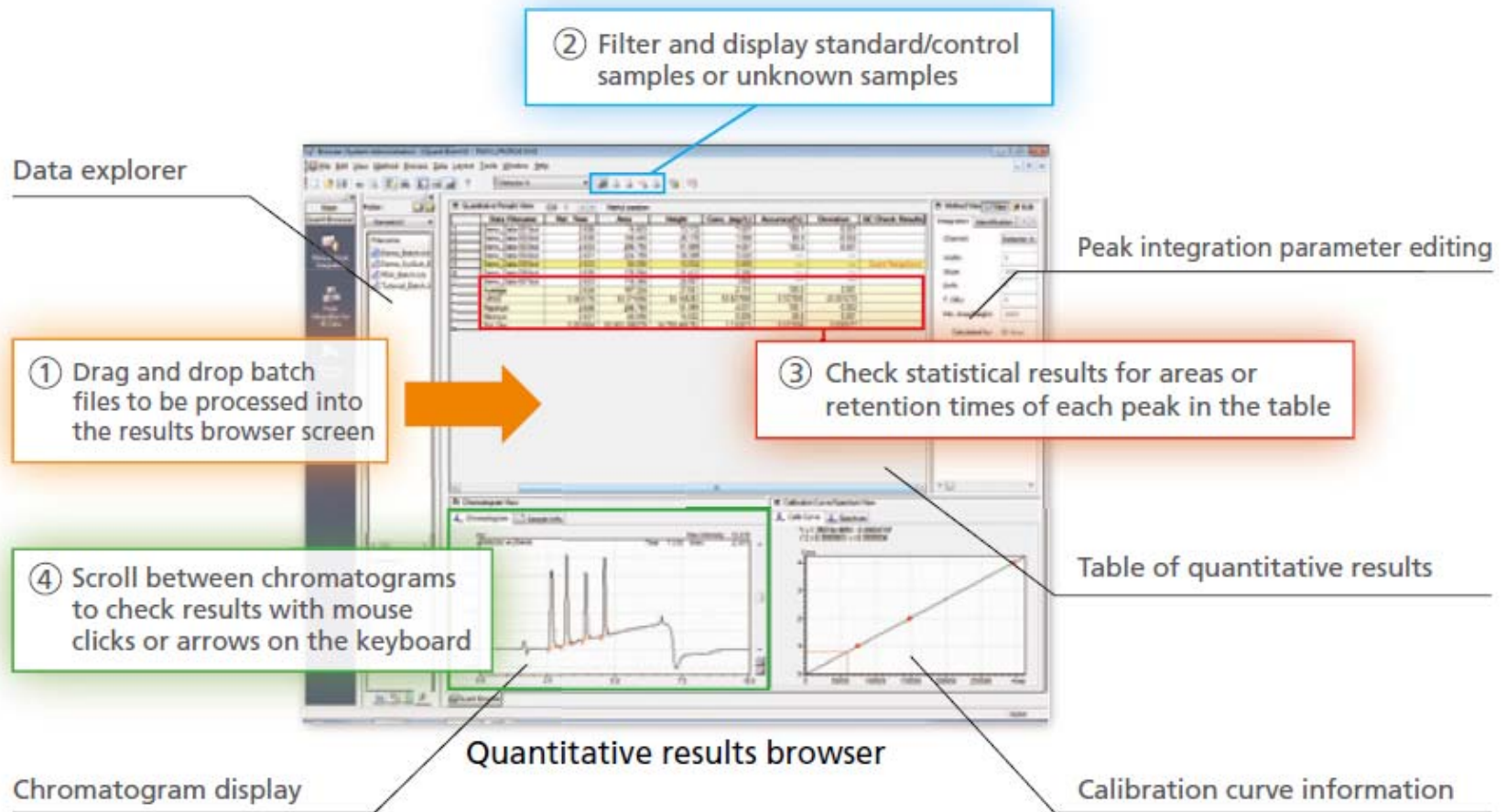
High Performance Liquid Chromatography

Perchlorate Quantitation in Drinking Water Using Suppressed Anion Chromatography Coupled with Single Quadrupole MS

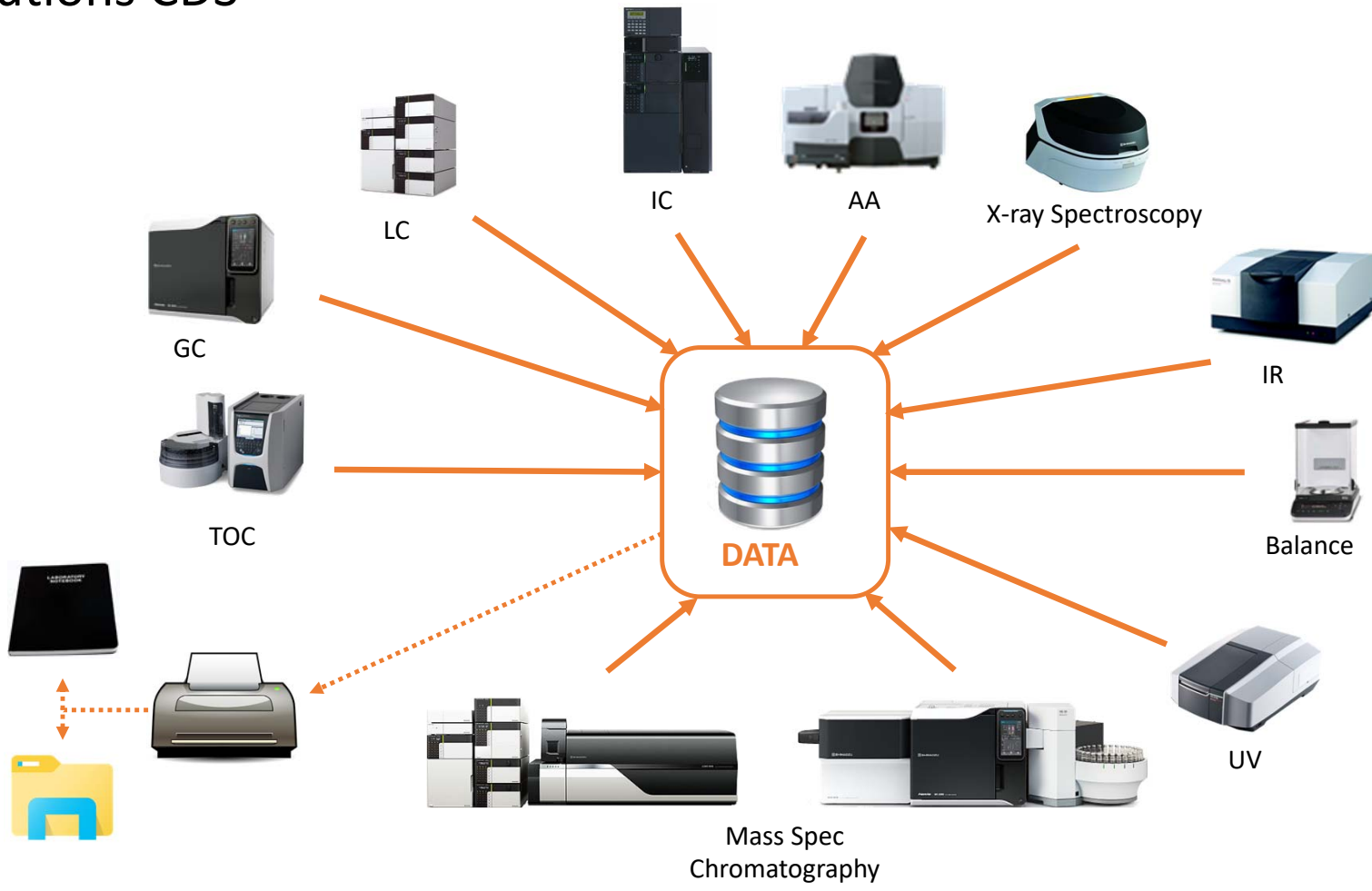


Perchlorate analysis of tap water using IC-MS. Panel A: chromatogram from the conductivity detector, panel B: perchlorate chromatogram from MS. Panel C: perchlorate (m/z 99 and 101) ions were found in mass spectra.

LabSolutions CDS



LabSolutions CDS





Learn more about the Shimadzu Prominence IC at
www.OneLabOneEarth.com

For additional information contact:

Ruth Marfil-Vega

rmmarfilvega@shimadzu.com

Product IC Team:

Hui Guo, huguo@shimadzu.com

Craig Young, cyoung@shimadzu.com